



# Axiom™ Surface Mounted Headwalls

[www.HSIheadwalls.com](http://www.HSIheadwalls.com)

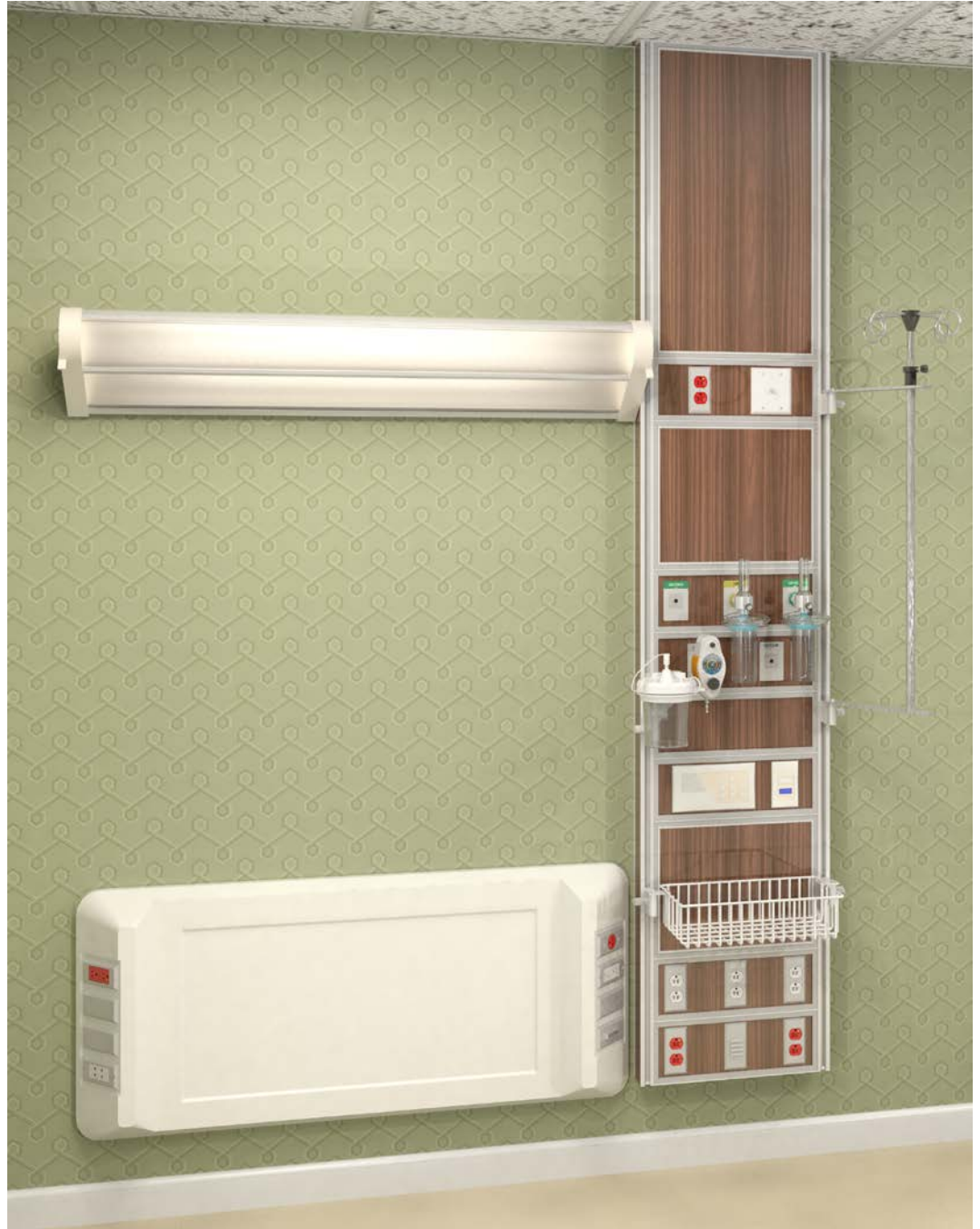
## Installation Instructions

Tel: 925.427.7800

Fax: 925.427.0800

[support@HSIheadwalls.com](mailto:support@HSIheadwalls.com)

Hospital Systems Inc.  
750 Garcia Avenue  
Pittsburg CA 94565  
USA



Document INSA-1

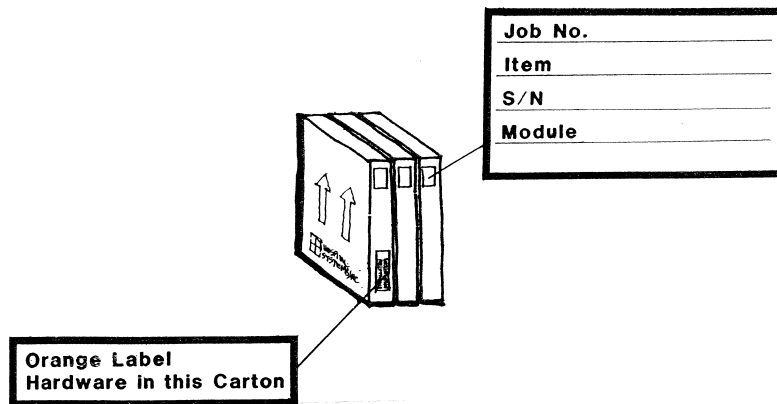
©2015 Hospital Systems, Inc., ALL RIGHTS RESERVED

## Introduction:

The Hospital Systems, Inc. Axiom Flush Headwall is made to order for this project. Each headwall consists of the rough-in bracket and the pre-wired and pre-piped headwall that is particular to each location or type.

Before attempting to install, please read and understand all of the instructions. In particular please refer to the final approved submittal drawings as they will take precedence over these instructions

Please review these installation instructions as well as the approved Hospital Systems shop drawings. An additional set of instructions and relevant drawings are enclosed with the shipment of headwalls. You will find these in the carton marked with the orange label "Installation Instructions in this Carton"

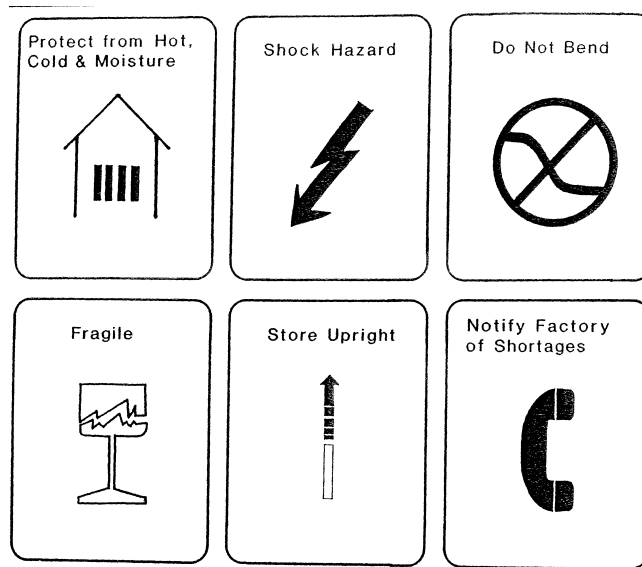


At the early stages of the project and immediately after the approved shop drawings are received by our Engineering Department, you will receive a ceiling mounting plate for each headwall. [Note, some multi-modular headwalls may require more than one ceiling mounting plate.] Included with this shipment will be copies of the shop drawings pertaining to the layout of the headwall, advisory backing, and ceiling mounting plates. Each of the holes in the ceiling mounting plate is pre-punched and has a specific purpose. Great care should be taken that the correct hole is used, as they will eventually be made up with the corresponding terminal compartment within the headwall.

A special heavy gauge ceiling mount plate is provided for free standing columns and headwalls. These plates are located and held in place at the ceiling line with suitable bracing to hold the top of the headwall unit. The bracing is provided by the installing contractor and must meet all local seismic codes.

The ceiling mounting plate will govern the future location of the headwall module and as such must be located at the ceiling line in the exact position that the headwall will occupy. Attach the shorter flange against the sheetrock or plaster of the building wall with this flange turned upward. This ceiling mounting plate will eventually become the top of the headwall

You will note that the blocking diagrams are advisory only, and that the blocking is not provided with the headwall. These are the locations that we expect the headwall to be fixed to the building wall. Actual blocking type should be in accordance with all local codes. Fasteners are not supplied with the headwall, as each fastener is dependant upon the type of blocking used.



Each headwall is individually packaged with particular care in the prevention of scratches or bend medical gas piping. Each carton is labeled with a serial number that will indicate the room [if available] to which the headwall will be located. Serial numbers will look like 8654-A123-56. This can be decoded as follows: 8654 is the Hospital Systems OrderID number; A123 is the room number, and 56 as the sequence number. Multi-modular headwalls will also be labeled as to the module location such as “Module A”

Mounting clips, screws and nuts, and other miscellaneous hardware is shipped within the carton marked with the bright orange label stating “Hardware in this Carton”

Upon receipt of your shipment of headwalls, immediately inspect all cartons for any visible damage in shipment. If any is found, follow the instructions enclosed with the packing slip. Headwalls should be stored on edge, in a clean, dry location and remain in their carton until unpacked for installation.

Bring the headwall [still in its carton] to the room location where it will be installed. Lay the unit flat on its back and remove the top section of the carton. Be careful not to let the staples scratch the finish or your hands. Note from the drawing where the mounting fasteners are to be placed. Most headwalls are fastened to the building at three points:

1. There are two mounting holes within the upper terminal compartment.
2. Locate two wall mounting clips [provided] on the back flange of an intermediate horizontal extrusion wheel shown
3. Locate two wall mounting clips [provided] on the back flange of the bottom horizontal extrusion wheel shown

Remove those access panels that cover the areas where the mounting fasteners will be attached to the building wall. For your convenience the snap in trim strip is shipped in the correct position, but turned sideways and taped – this will allow easy removal. To remove the access panel:

1. Remove the four gray trim strips
2. Remove the 4 to 6 #8-32 Phillips head screws that are located behind the trim strips

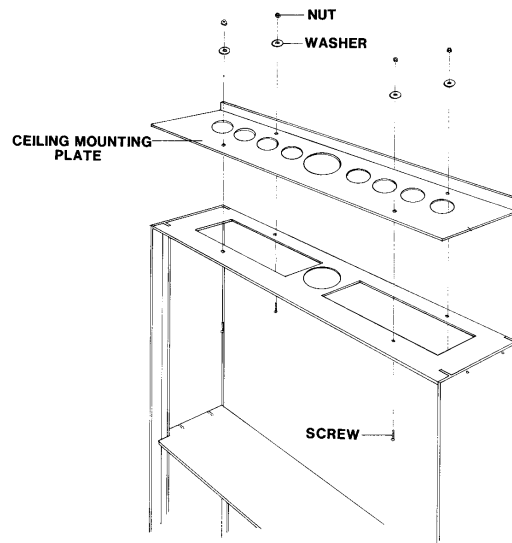
3. Lift out the panel and set it aside. "note that each access panel is marked on the inside with the unit serial number and an arrow indicating the top of the panel.

It is important to keep the trim, screws, and panels together.

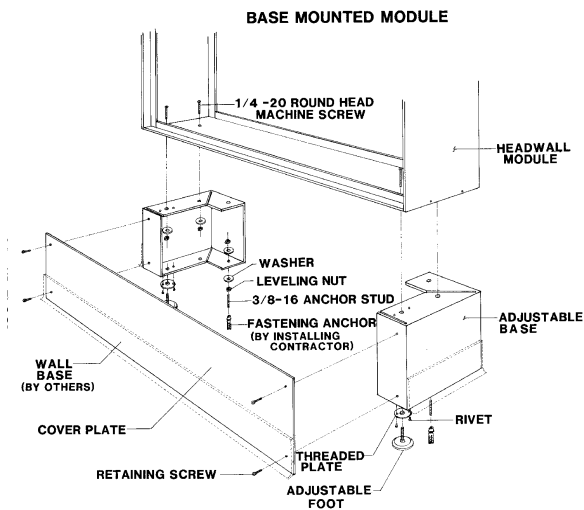


Now lift the headwall out of the carton, and place it in position. With the headwall top tilted back against the building wall and the bottom away, pass the medical gas piping through the appropriate hole in the ceiling mounting plate. Push the headwall up and flat against the building wall, lift it up against the ceiling mounting plate and fasten the headwall to the blocking that was placed within the building wall.

**HARDWARE AND COMPONENTS SHOWN  
ARE SUPPLIED BY H.S.I. AS REQUIRED**



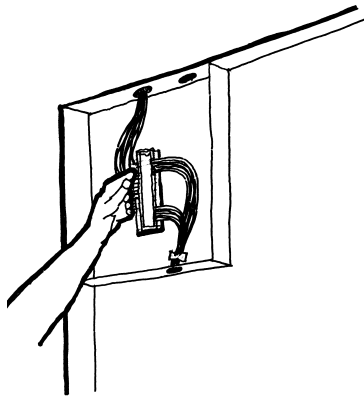
For those headwalls that include an adjustable base, once the headwall is in position, the adjustable feet at the bottom of the base can be screwed in or out until the top of the headwall is a snug fit to the ceiling mounting plate



Bolt the top of the headwall to the ceiling mounting plate with the fasteners provided.

## Electrical and Communication Wiring and Cables

Pull electrical and communication wiring into the appropriate terminal compartments. The rough-in bracket has now become the top of the terminal compartments. Connect the incoming wires to the pig-tails or terminal strips provided in the headwall. Communication wiring should go through the terminal compartment directly to the device that it will serve. A pull cord has been provided.



## Connecting the Medical Gas Lines

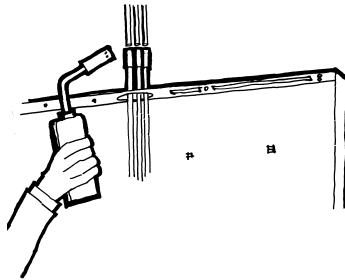
Connect the medical gas lines. All brazing must be completed according to the NFPA 99 and local codes. Test all medical gas lines and brazed joints according to NFPA-99 and local codes.



The inert gas (i.e. N<sub>2</sub>, CO<sub>2</sub>), used in brazing, must not overheat the gas outlets. (Suggestion – have inert gas flow through and away from the outlet.) Damage to the outlet due to overheating is NOT covered by warranty.



All piping and medical gas outlets in the headwalls are debris-free. Please use care when blowing down the system piping that no debris comes into the headwall as damage to the medical gas outlet 'O' rings may occur. Damaged outlets are NOT covered by warranty



## Nurse Call and Other Communication Devices

Install devices per the installation instructions of the device manufacturer. Mounting holes are drilled and tapped for 6-32 screws.

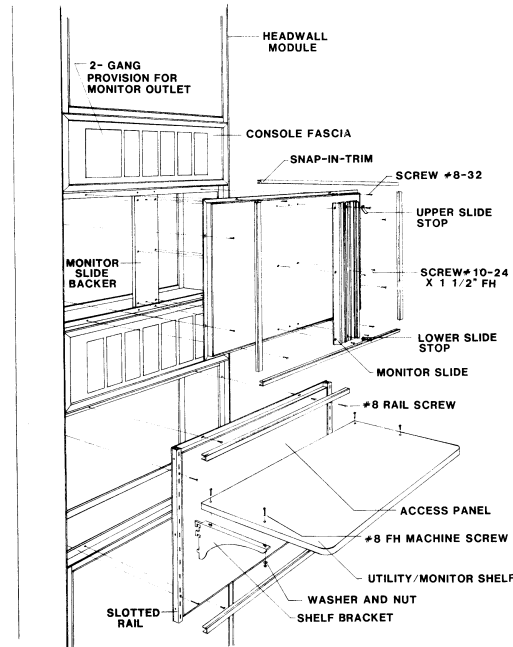
Note: for telephone and/or data jacks, we have provided a module holder and coverplate. These holders will accommodate standard RJ-11, and RJ-45 modules. DO NOT INSTALL standard wall box plates. Additional holders and cover plates as well as modules (in various colors, and blanks) are available from Hospital Systems.

# Re-Installing the Access Panel

All access panels for the same type and size of headwall are interchangeable. Note that the panels must be re-inserted in the same position and orientation as removed to ensure that all of the holes are in line. Be sure to center the access panel so that the trim will fit evenly all-around. Insert the screws and then snap in the trim.



Do NOT use powered screwdrivers. Stripped holes or screw heads are NOT covered by warranty



To install the snap in trim strips. Insert the vertical strips first then the horizontal. Gently squeeze one of the edges of one end of the strip and insert it into the groove, while holding it in place with your thumb, pull the free end back away from the headwall just enough to bow the trim strip. This bowing action will pull the legs together and the strip can be easily installed. Caution – forcing the trim strip into the space where the access panel is not centered may cause the trim strip to crack.



## **Final Test**

Medgas outlets: Complete the testing as per NFPA-99.

Electrical devices: Test electrical receptacles and other devices per local code and general practices.

## **Cleaning**

Use a soft cloth with non-abrasive cleaner (i.e. 409 or Windex) to remove dirt and fingerprints.