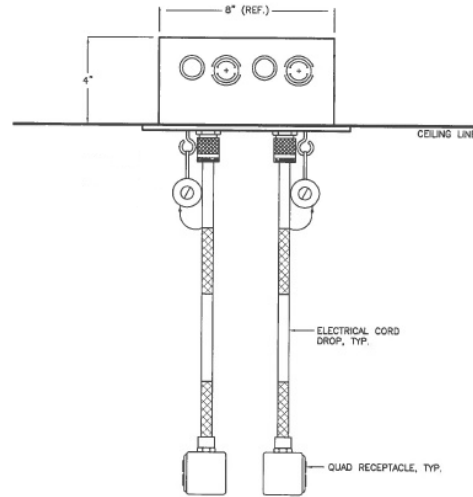


## MedGas Hose & Electrical/Data Cord Drops

HSI offers a **MedGas Hose & Electrical/Data Cord Drop**. The Hose/Cord Drop will accommodate a mixture of various medical gas and vacuum hoses, as well as electrical and data cord drops.

Hose and Cord drops can be added or removed to suit the requirement of the room. Each drop is considered an individual item unless otherwise noted. Standard back box is 8"X8" and can accommodate up to 4 services. Larger boxes are available when required. Refer to part numbers and descriptions on page 2.



### Features

- Welded steel construction back box
- Cover plate is stainless steel with a brushed finish
- Exposed cable reels
- Adjustable cable retractor to pull hose up and out of the way, when not in use
- Strain relief point for each device

### Medical Gas Hose Drop

- DISS fitting at proximal end
- Conductive, color coded hose, 6ft
- Kellems strain relief grip
- Medical gas coupler at distal end
- Available in DISS, Puritan Bennett, Ohmeda, Chemetron, and Oxequip

### Electrical Cord Drop

- Hard Wired
- Heavy duty, SJTOW cord, 6ft
- Kellems strain relief grip
- Electrical Receptacle(s), Hospital Grade, Duplex, 20A, mounted in a NEMO non-conductive box

**Data Cord Drop**

- ¾", 1g, Face plate at top end
- Flex, Plastic Conduit, 6ft
- Kellems strain relief grip
- 4 port module insert and face plate

**Ordering Information**

Medical Gas Hose Drops are available with any configuration of the following medical gas outlets [Up to 8 service] Please specify Outlet Type at time of purchase.

- Oxygen
- Medical Air
- Vacuum
- EVAC [WAGD]
- N2O
- Co2

<b><u>Medical Gas Hose Drops</u></b>	<b><u>Part Number</u></b>
Medical Gas, Single, Vacuum	299055-VAC
Medical Gas, Single, Oxygen	299056-OXY
Medical Gas, Single, Medical Air	299057-AIR
Medical Gas, Single, Nitrous Oxide	299058-N2O
Medical Gas, Single, Evacuation (WAGD)	299059-WAGD
Medical Gas, Single, Carbon Dioxide	299060-CO2
Medical Gas, Single, Nitrogen	299061-N2
<b><u>Electrical Cord Drops</u></b>	<b><u>Part Number</u></b>
Single Drop w/ 1 Duplex, Emergency, Red	299098
Single Drop w/ 1 Duplex, Normal, Ivory	299098-I
Single Drop w/ 1 Duplex, Normal, White	299098-W
Single Drop w/ 2 Duplex, Emergency, Red	299099
Single Drop w/ 2 Duplex, Normal, Ivory	299099-I
Single Drop w/ 2 Duplex, Normal, White	299099-W
<b><u>Data Cord Drop</u></b>	<b><u>Part Number</u></b>
Single Drop, Data with 4 Port Module Insert	299100

**\* Boxes and Drops are available as individual items or as an assembly. Available with US plug, British Standard, and DIN.**