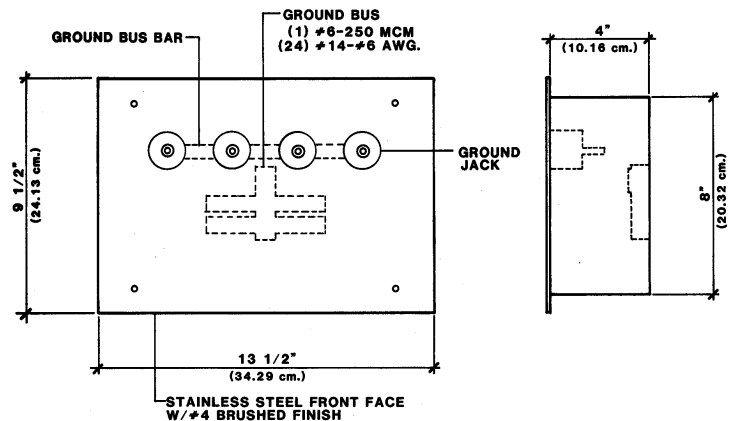
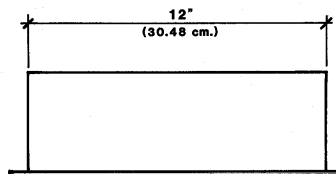
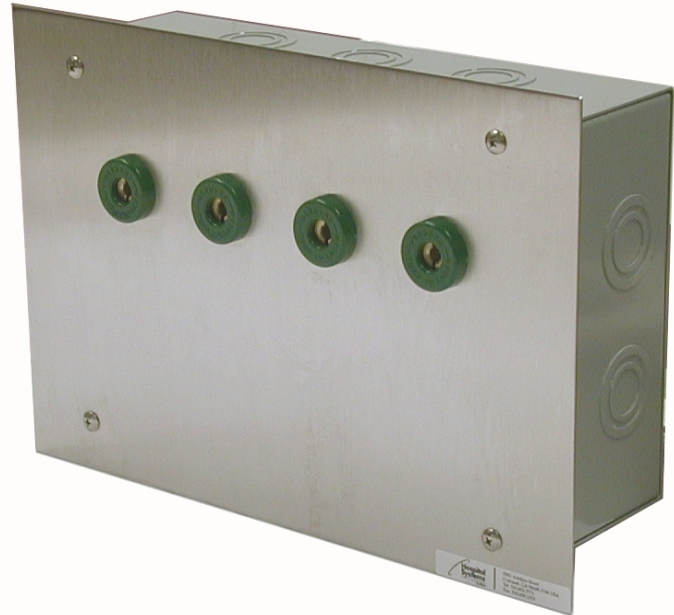


The **Patient Ground Module** is ideal to accommodate the grounding of fixed metal items around the electrically susceptible patient as well as the grounding of portable equipment in the same area.

The copper ground bus provides 24 circuit taps that will accommodate wire sizes from #14 to #6, and one line lug for wire sizes #6 to 250mcm. The construction of the ground bus has been tested and approved by Underwriters Laboratories Inc. The ground bus is located conveniently within the backbox to allow easy installation of the ground wires.

The ground jacks for grounding portable equipment are located in the front trim. Modules for 2 to 8 ground jacks are standard: a larger module will accommodate more than 8 ground jacks. The heavy duty ground jacks will mate with all industry standard ground plugs as described in NFPA Standards.

The front trim is 304 stainless steel with a #4 brushed finish and is attached to the code gauge steel, baked enamel backbox with stainless steel screws.



### Ordering Information:

Number of Ground Jacks	Part Number
2	358284
4	358184
6	358049
8	358081