



Hose/ Cord Drop Installation Instructions

www.HSIheadwalls.com

Installation Instructions

Tel: 925.427.7800
Fax: 925.427.0800

support@HSIheadwalls.com



Hospital Systems Inc.
750 Garcia Avenue
Pittsburg CA 94565
USA

The Hospital Systems, Inc. Hose/ Cord Drop is designed for use in medical facilities to deliver various medical gases and 120 volt A.C. electrical service.

The Hose/Cord Drop has been shipped to you complete and ready to install

Drop Installation Instructions

1. After the hose drop location has been selected and coordinated with all other trades to avoid conflicts with other ceiling installed fixtures:

CAUTION	In areas where surgical lights or other fixtures are used, exercise care to locate the cord drop so that the extended hoses avoid contact with the heated surfaces of such fixtures.
NOTE	Installation of the Drop should be done in accordance with the National Electrical Code (NFPA 70). As an extension of the hospital or facility electrical system, standards applicable to this product are contained in the NEC

- a. Use (minimum) 1/4" threaded rods (not included) to structurally anchor the rough-in box. Anti-sway bracing is also required. **See Figure 1.**
- b. The rough-in box opening shall be flush with the finished ceiling.
- c. Remove the plastic cap from the copper inlet supply tube and braze the correct service supply line to the tube. Use a wet cloth around the tube where it enters the box to keep the DISS fitting cool. See NFPA 99, for installation and testing procedures. The identity of the gas service is labeled on the tube and permanently stamped on the DISS fitting inside the box.

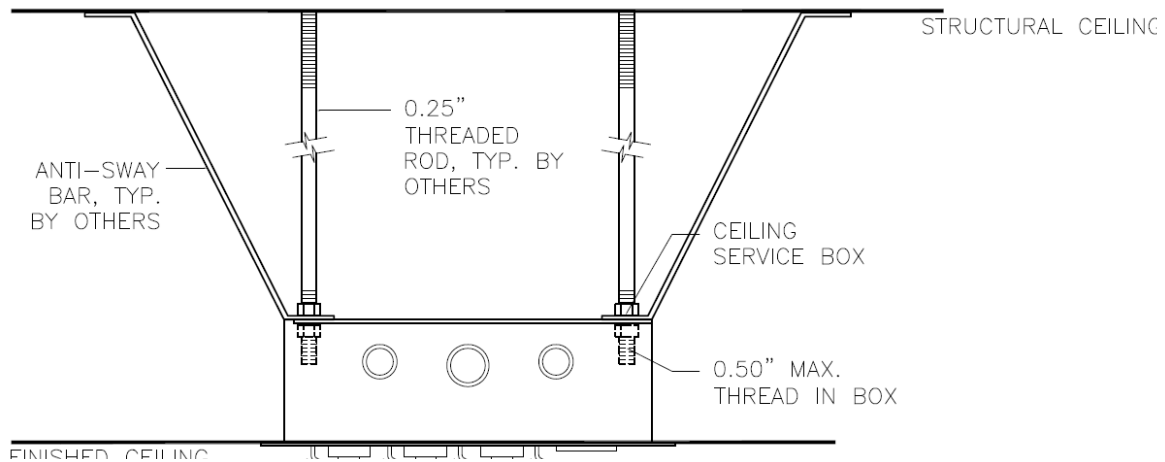
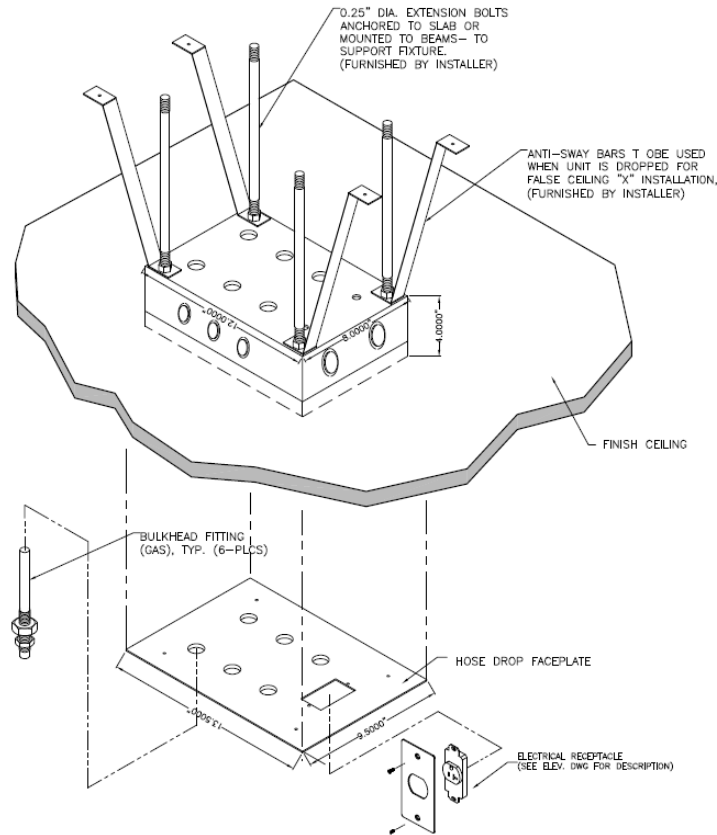


Figure 1



- After pressure testing is finished, the piping system can be blown clear by use of an open DISS fitting to depress the check valve located in the DISS outlet station.

CAUTION: Keep head and eyes clear of the outlet gas flow when purging. Wear safety goggles.

Use only proper DISS fitting. Use of a screwdriver or other implement may damage the o-rings.

- Do not use oil or grease on or near medical gas outlets. Use only lubricants approved for oxygen service such as O-Ring Lubricant, Cat. No. 64-90-2111.
- Outlets are keyed to prevent interchange of gas services.

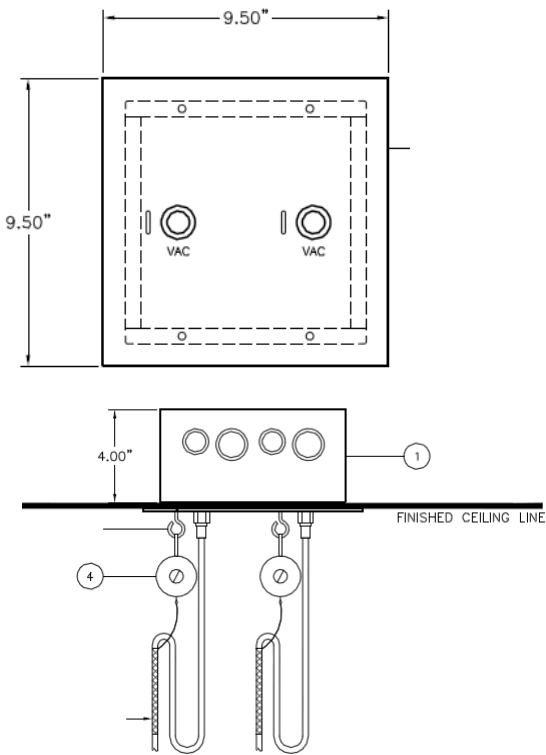
CAUTION AFTER INSTALLATION OF THE STATION OUTLETS. TESTING SHALL BE IN ACCORDANCE WITH NFPA 56F, 1977. Installer is counseled to strictly conform to NFPA 56F and to certify to the architect or owner that cross-connection testing has been completed.

5. Open the room or area supply valves.
6. Install flex or conduit between provided hole and nearby contractor provided junction box.
Pull provided cable to junction box and make proper connection.
7. Replace stainless steel cover

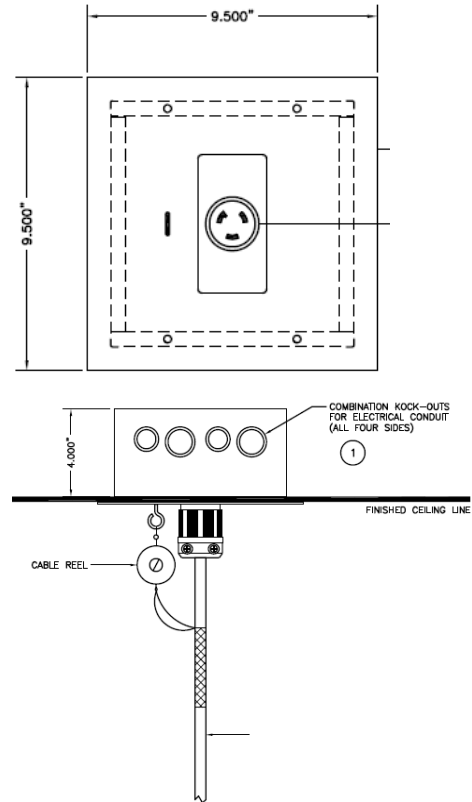
The installation is now complete. After supply current has been turned on, make appropriate electrical tests. We counsel strict adherence to NFPA99 testing procedures requiring analyzation of the gas flowing from the hose reels following the installation.

Cord Installation Instructions

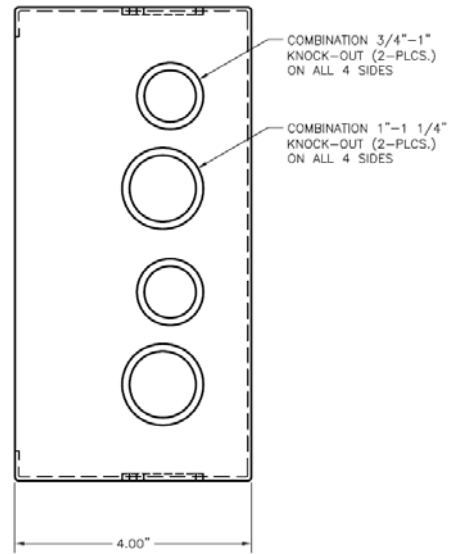
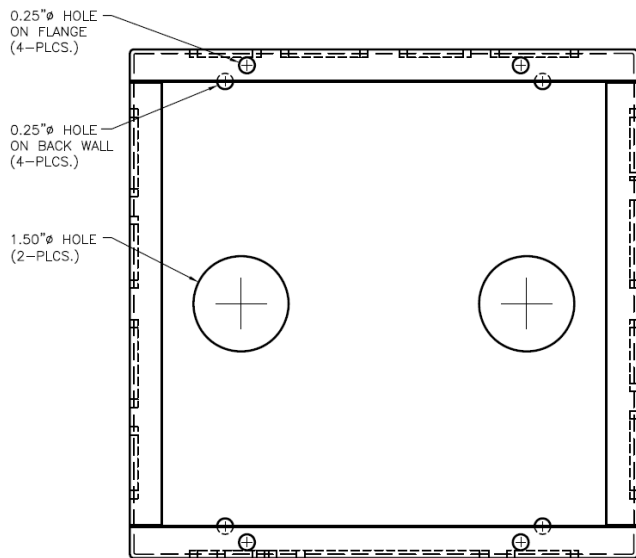
1. After the hose drop structure is installed you can attach the Electrical/ Medical Gas drops to the ceiling plate:
 - a. Hang the retractor from the preinstalled hooks on the face plate.
 - b. Medical gas hoses attach to ceiling box with a preinstalled DISS fitting.
 - c. Electrical components attach to the ceiling box with a preinstalled Twist Lock receptacle.



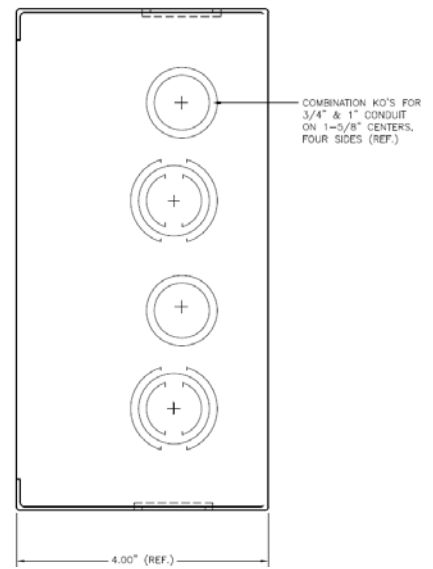
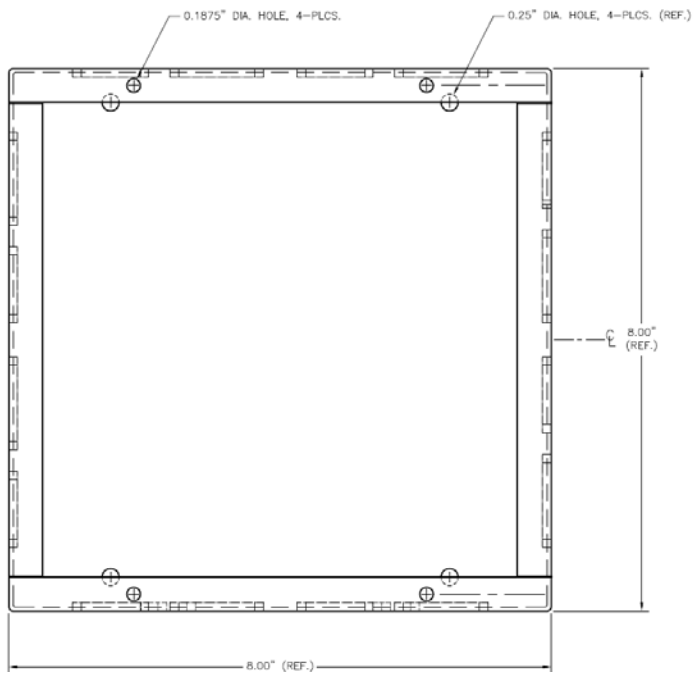
Medical Gas Drop Install Diagram



Electrical Drop Install Diagram



Medical Gas Back Box Details



Electrical Back Box Details